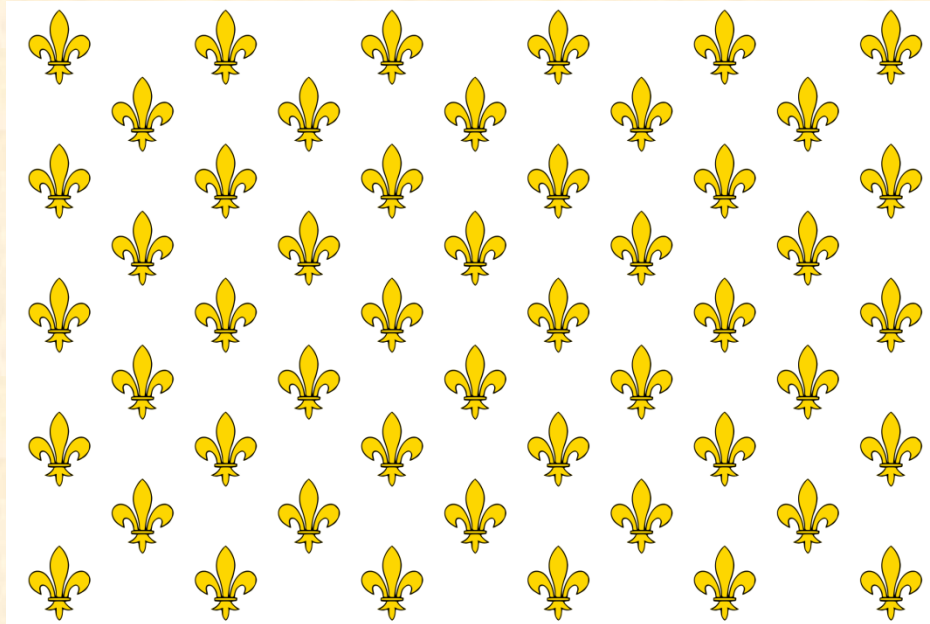


The Ancien Régime



The Bourbon kings' fleur-de-lis flag



*His Majesty
King Louis XVI
of France*

*(Antoine-François
Callet, 1781)*

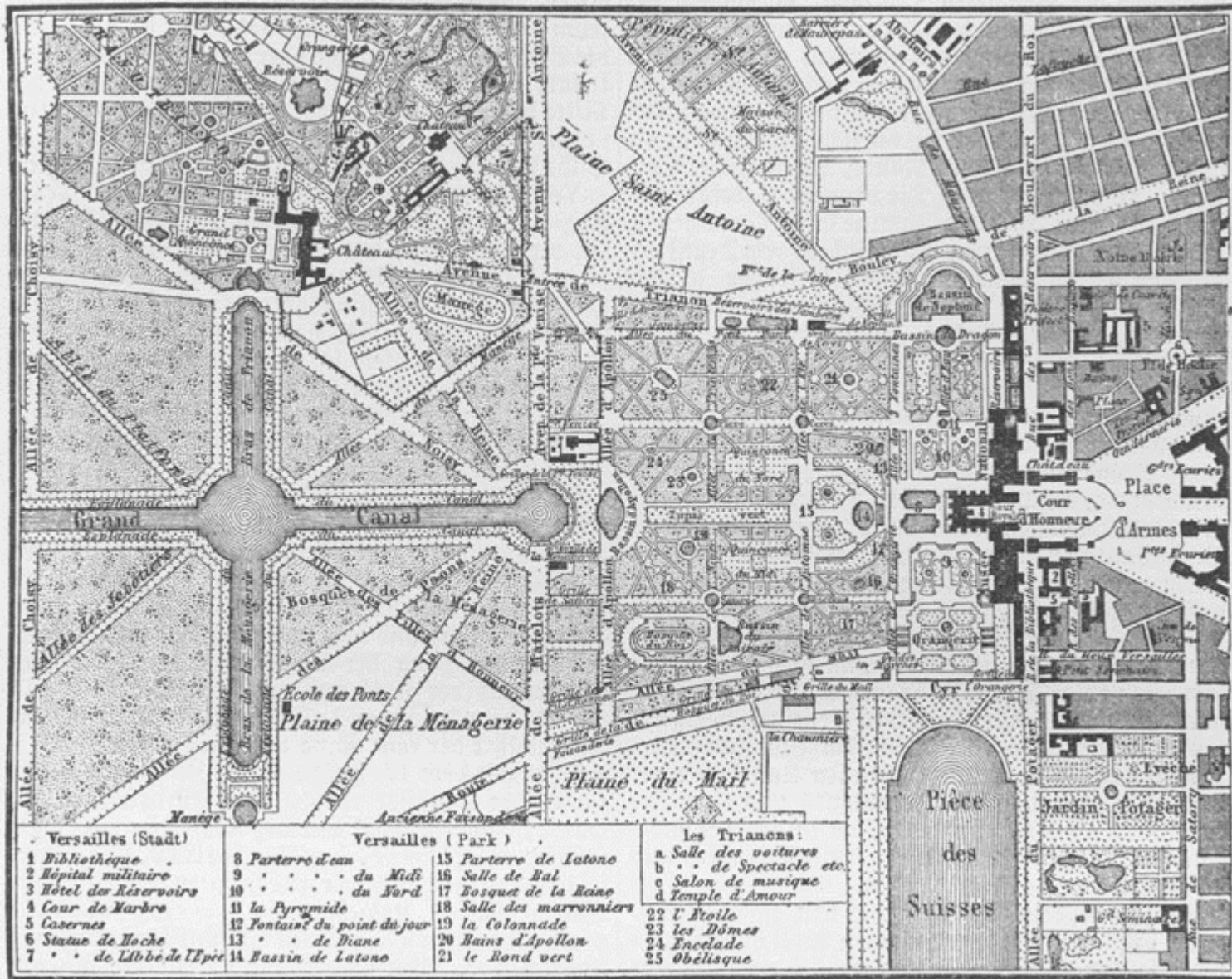


*Her Majesty
Queen
Marie Antoinette
of France*

(Joseph Ducreux, 1769)



The Palace of Versailles
(Pierre Patel, ca. 1668)



The Palace of Versailles

The Palace indoors and ...



... outdoors



Sources: https://commons.wikimedia.org/wiki/File%3AChateau_Versailles_Galerie_des_Glaces.jpg by Myrabella; https://commons.wikimedia.org/wiki/File%3ALe_ch%C3%A2teau_de_versailles_vue_en_perspective.jpg by Esalia; https://commons.wikimedia.org/wiki/File%3ALit_de_Louis_XIV.jpg by Blood Destructor; [https://commons.wikimedia.org/wiki/File%3AP1030357_\(S015846430\).jpg](https://commons.wikimedia.org/wiki/File%3AP1030357_(S015846430).jpg) by von Ricardo Tullio Gandelman from Rio de Janeiro, Brazil (P1030357) Uploaded by Marcus Cyron



*The France of
the Ancien Regime*

- 1 : Belfort 1648
- 2 : Aunis 1371
- 3 : Saintonge 1371
- 4 : Angoumois 1515
- 5 : Comté de Nice 1860
- 6 : Comté de Foix 1589
- 7 : Roussillon 1659
- 8 : Comtat Venaissin 1791

Copyright Histoire-Généalogie.com



This is how just a few (royal) people lived:



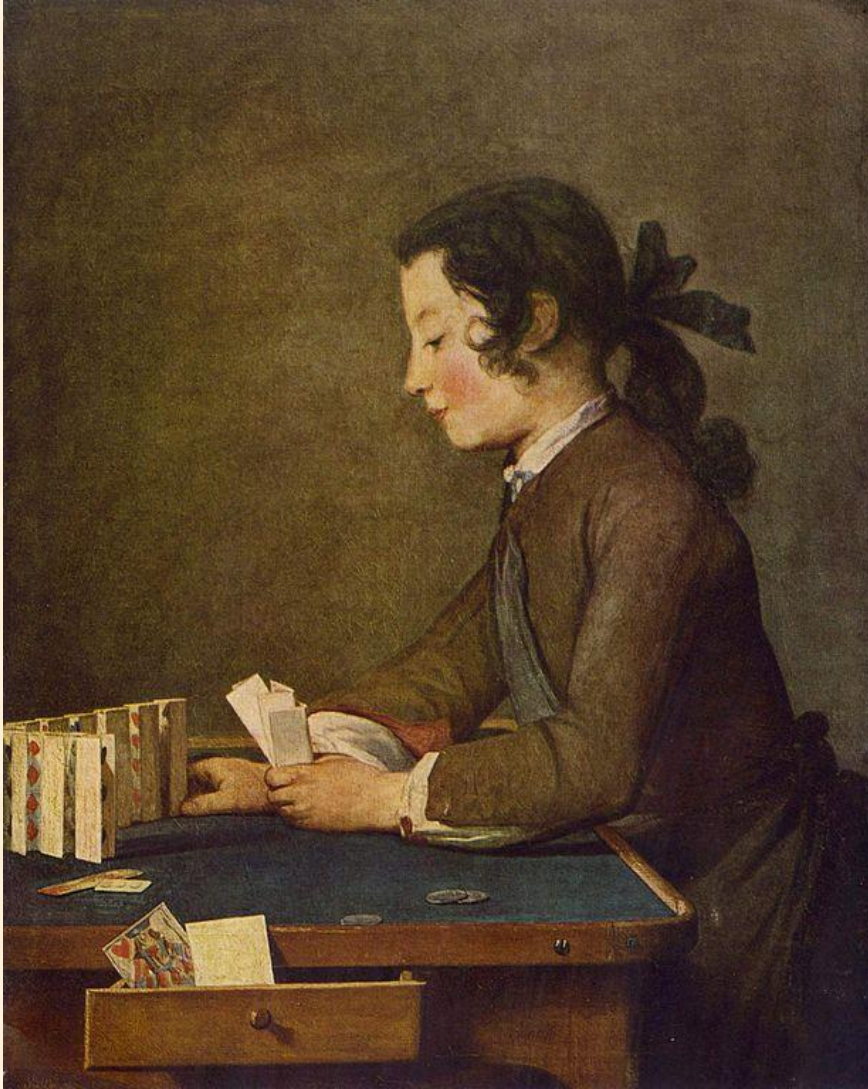
The Royal Family (1781) by an anonymous painter

This is how an increasing number of people lived:



Louis Le Nain, The Cart, 1641

This is how an increasing number of people lived:



Jean-Baptiste Chardin, The Card Castle, 1737



Jean-Baptiste Chardin, The Governess, 1739

This is the structure of French society in the mid-18th century:

The Three Estates

First



Archbishop Brienne de Toulouse

Second



Duchess of Polignac

Third



Georges Couthon, lawyer