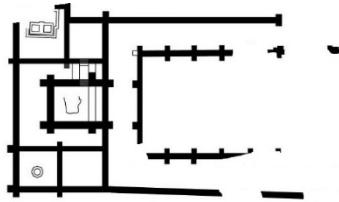
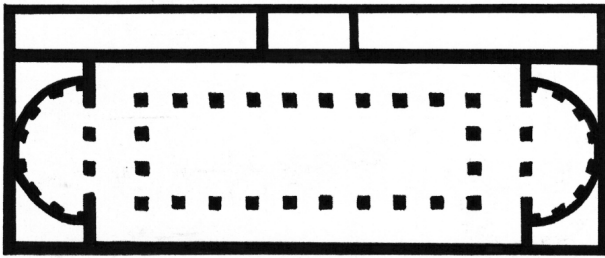


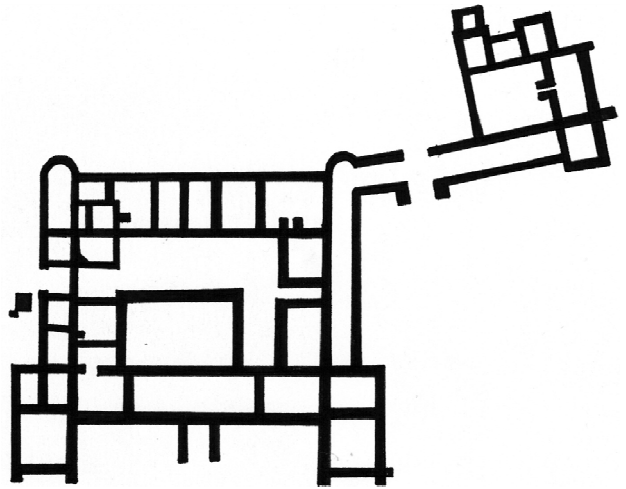
Grundrisse vergleichen – Was steckt hinter dem rätselhaften Gebäude in Riegel?



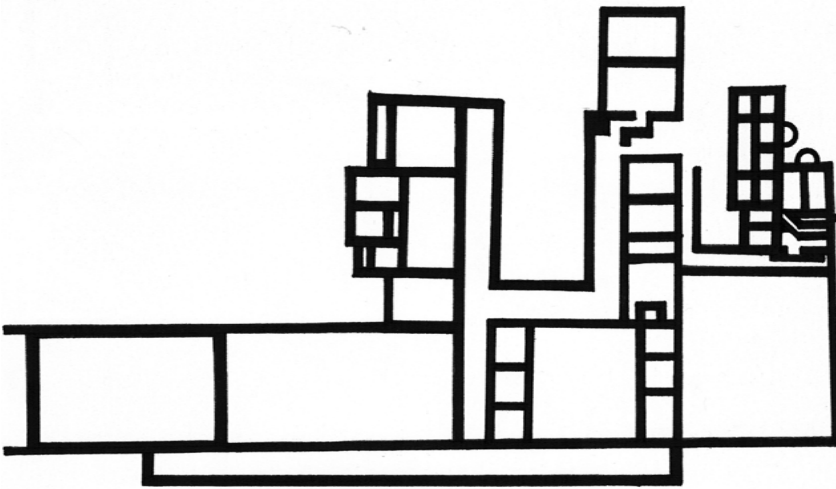
M1 Riegel © Ch. Dreier



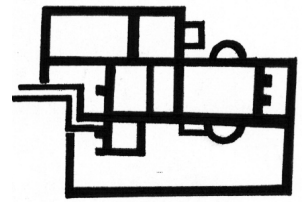
M2 Augst © I. Staffa



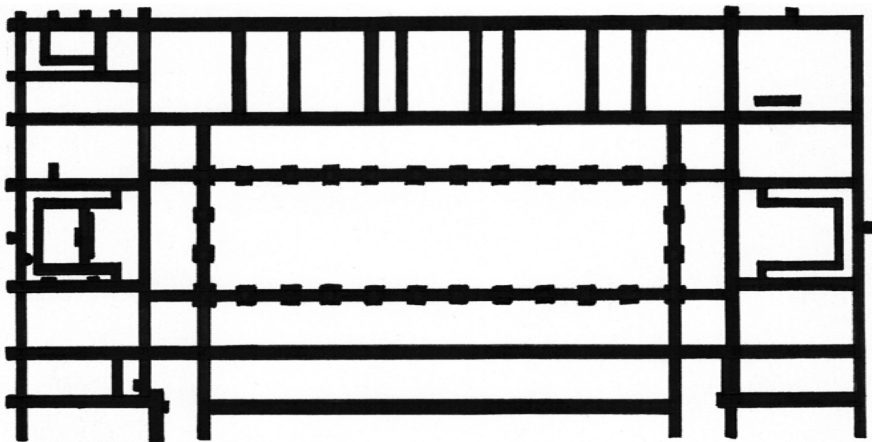
M3 Hechingen-Stein © I. Staffa



M4 Heitersheim © I. Staffa



M5 Güglingen © I. Staffa



M6 Xanten © I. Staffa

Erläuterungen:

M1 Riegel – Basilika

M2 Augst – Basilika (1. Steinbauphase)

M3 Hechingen-Stein – villa rustica

M4 Heitersheim – villa rustica

M5 Güglingen - Bad

M6 Xanten – Basilika (der Principia des neronischen Doppellegionslagers Vetera I)