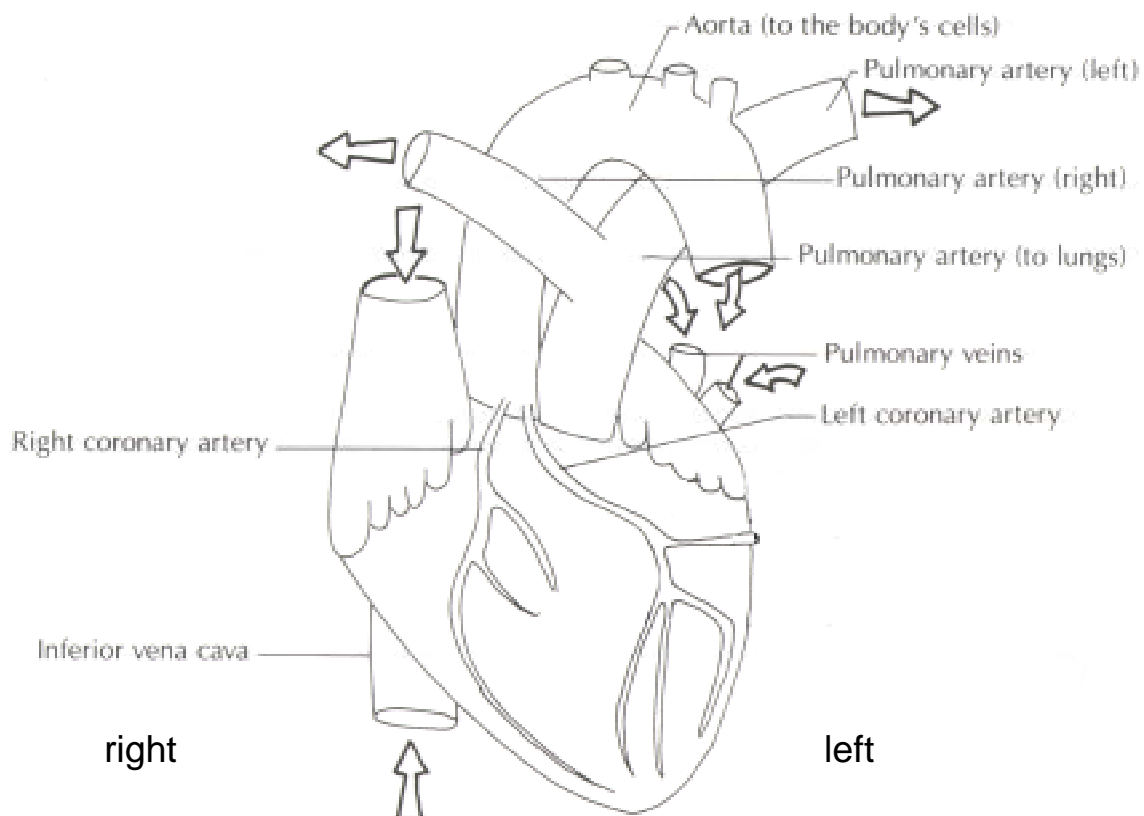


## Dissection of a pig's or sheep's heart

### The Heart from the Outside (Anterior View)

Take a look at the heart from the outside. The diagram shows an anterior (=front) view.

- Compare it to a model of the human heart.
  - Try to identify all the structures and the blood vessels. If they have been cut off, try to find the roots of the main veins and arteries.
  - Make a labelled drawing of the heart (actual size, front view).
  - With a dotted pencil line indicate where you suppose the atria and ventricles are located. (Hint: most of the atria area is normally covered with fatty tissue.)
- Check the interactive computer map to get an idea of the location of the heart spaces.<sup>1</sup>



<sup>1</sup> <http://www.gwc.maricopa.edu/class/bio202/heart/anthrt.htm>

## The Heart from the Inside (Anterior View)

1. Carefully cut the heart open with a longitudinal section <sup>2</sup>. Plan your cut carefully to get a view of all the heart's chambers.

You will probably get a view like the following.

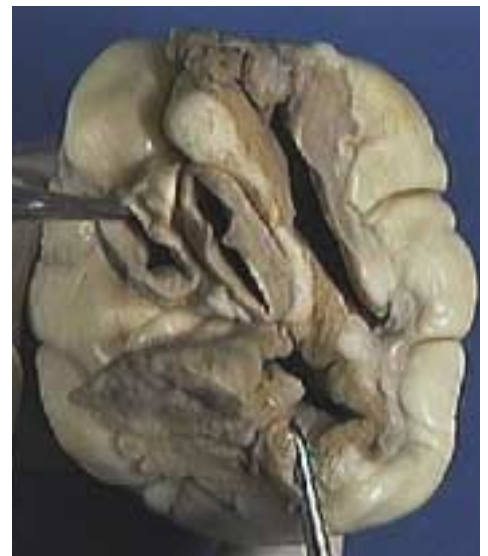
- Compare the structures to a model of the human heart.
- Try to identify all the structures and the roots and entries of blood vessels. Check the interactive computer map to get an idea of the position of the various structures and spaces.
- Look for the heart valves (flap valves and pocket valves).
- Make a labelled drawing of the longitudinal section (actual size, front view).
- Make labelled drawings of details, i.e. flap valves and their tendons only.



2. Carefully cut another heart with a cross section at a line where you expect to find the roots/trunks of the aorta and pulmonary arteries. Plan your cut carefully!

You will probably get a view like the following.

- Try to identify all the structures and the roots and entries of blood vessels. Check the interactive computer map to get an idea of the position of the various structures and spaces.
- Examine the veins and arteries in more detail (thickness of walls, lumen).
- Make a labelled drawing of the cross section <sup>3</sup>(actual size, view from top ).



---

<sup>2</sup> Längsschnitt

<sup>3</sup> Querschnitt